

CONTENTS

Lesson 1	Mapping the Earth	2-3
Lesson 2	Using Map Skills	4-5
Lesson 3	Reading a Map	6-7
Lesson 4	Using a Highway Map	8-9
Lesson 5	Using Scale	10-11
Lesson 6	Comparing Scale	12-13
Lesson 7	Finding Routes and Distance	14-15
Lesson 8	Finding Latitude	16
Lesson 9	Finding Longitude	17
Lesson 10	Finding Places in the Eastern Hemisphere	18-19
Lesson 11	Using a Political Map	20-21
Lesson 12	Elevation and Contour Lines	22-23
Lesson 13	Finding Elevation	24-25
Lesson 14	Using an Atlas	26-27
Lesson 15	Using Special-Purpose Maps	28-29
Lesson 16	Comparing Special-Purpose Maps	30-31
Lesson 17	World Time Zones	32-33
Lesson 18	Using Map Projections	34-35
Lesson 19	Using an Historical Map	36-37
Lesson 20	Comparing Historical Maps	38
Lesson 21	Interpreting Map Data	39
Lesson 22	Using a Population and Climate Map	40-41
Lesson 23	Using Maps to Make Predictions	42
Lesson 24	Using Maps to Solve Problems	43
Lesson 25	Reading Bar Graphs	44
Lesson 26	Reading Double-Bar Graphs	45
Lesson 27	Reading Circle Graphs	46
Lesson 28	Comparing Graphs	47
Lesson 29	Reading Line Graphs	48-49
Lesson 30	Reading Tables	50-51
Lesson 31	Interpreting Diagrams	52-53
Lesson 32	Interpreting Charts	54
Lesson 33	Interpreting Cartoons	55-57
Lesson 34	Reading Time Lines	58-59
Glossary		60
Answer Key		61-64
Atlas		65-76
Skills Index		Inside Back Cover

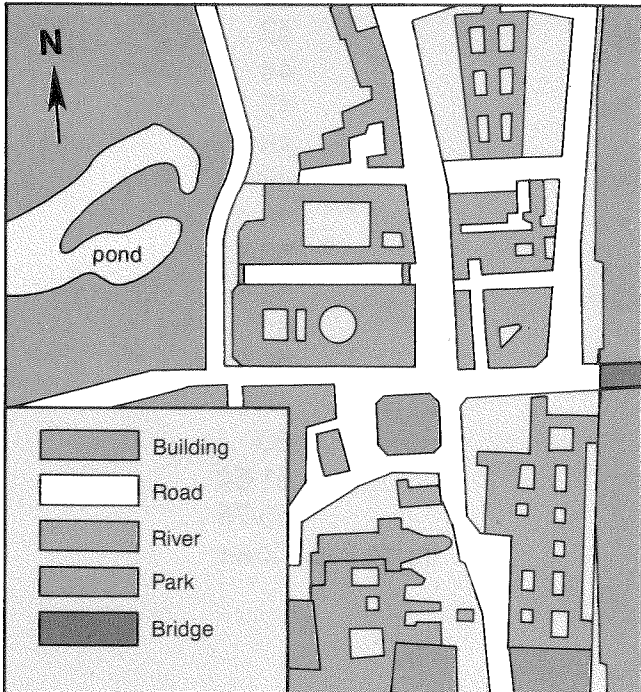
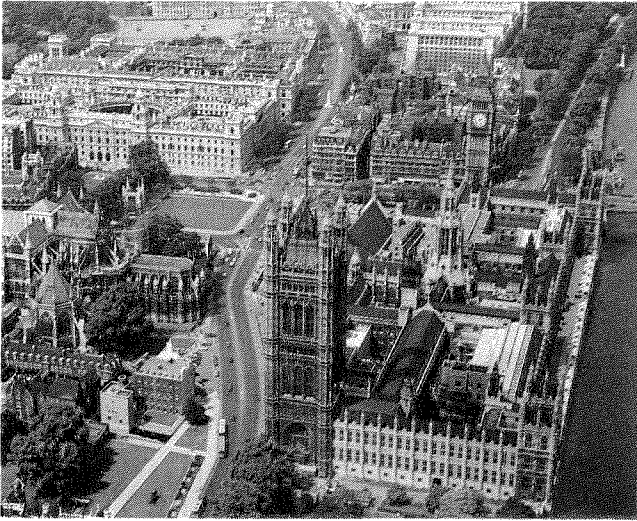
Lesson 1

Mapping the Earth

Objectives: to compare photographs and maps and to identify hemispheres

Cartographers use **aerial photographs** which are photographs of a location taken from an airplane or satellite. From the photograph, the cartographer picks out details of the location that he wants to show on his map.

The aerial photograph and map below both show a part of London, England. Use the photograph and map to answer the questions.



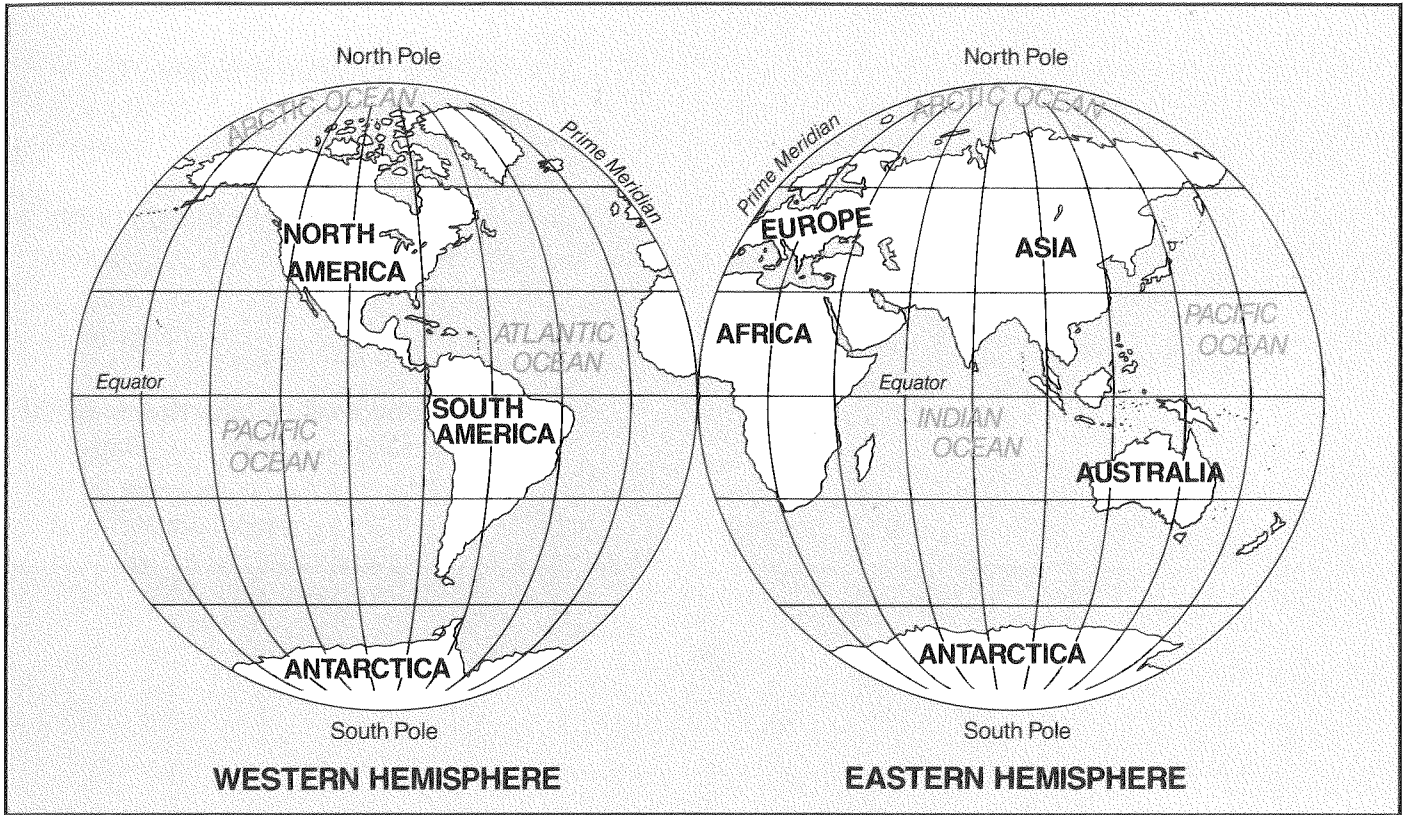
1. What color on the map stands for buildings?
a. yellow b. green c. purple d. orange
2. What does the blue area that runs along the entire east side of the map represent?
a. railroad b. river c. highway d. building
3. What lets you see the clock on the tower of Big Ben?
a. map
b. photograph
c. both map and photograph
4. What tells you how close the river is to the Parliament Buildings?
a. map
b. photograph
c. both map and photograph
5. What can you see is true from both the map and photograph?
a. London has some parks.
b. London has a subway system.
c. Government buildings have sharp towers.
d. Government buildings have flat roofs.
6. Which one do you think would be more useful to a tourist visiting London for the first time, the photograph or the map?

Give one reason for your answer.

A globe is a sphere. When you look at a globe, you can see half of the world or one hemisphere at a time. The map below shows the world

divided in half to show the Western and Eastern Hemispheres.

Use the map to answer the questions below.



7. If you are a citizen of a country in North America, in which hemisphere do you live?

8. If you are a citizen of a country in South America, in which hemisphere do you live?

9. In which hemisphere do the people of Asia live?

10. In which direction would you travel from Africa to South America?

- a. north
- b. south
- c. east
- d. west

11. In which direction would you travel from Asia to Antarctica?

- a. north
- b. south
- c. east
- d. west

12. How many oceans are located in the Eastern Hemisphere?

- a. 3
- b. 1
- c. 4
- d. 2

13. Which one of these is located closest to Antarctica?

- a. Australia
- b. Asia
- c. South America
- d. Africa

14. How many continents lie partly in the Western Hemisphere and partly in the Eastern Hemisphere?

- a. 5
- b. 4
- c. 1
- d. 2

Lesson 2

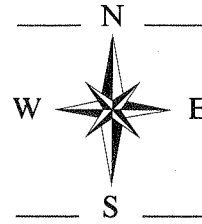
Using Map Skills

Objectives: to use a compass to find direction and to use a map key

One important symbol on a map is a **compass rose**. A compass shows where the **cardinal directions** north, south, east and west are on the map. It sometimes shows where the **intermediate directions** northeast, southeast, southwest and northwest are. The meanings of the other symbols on the map can be found in the map key.

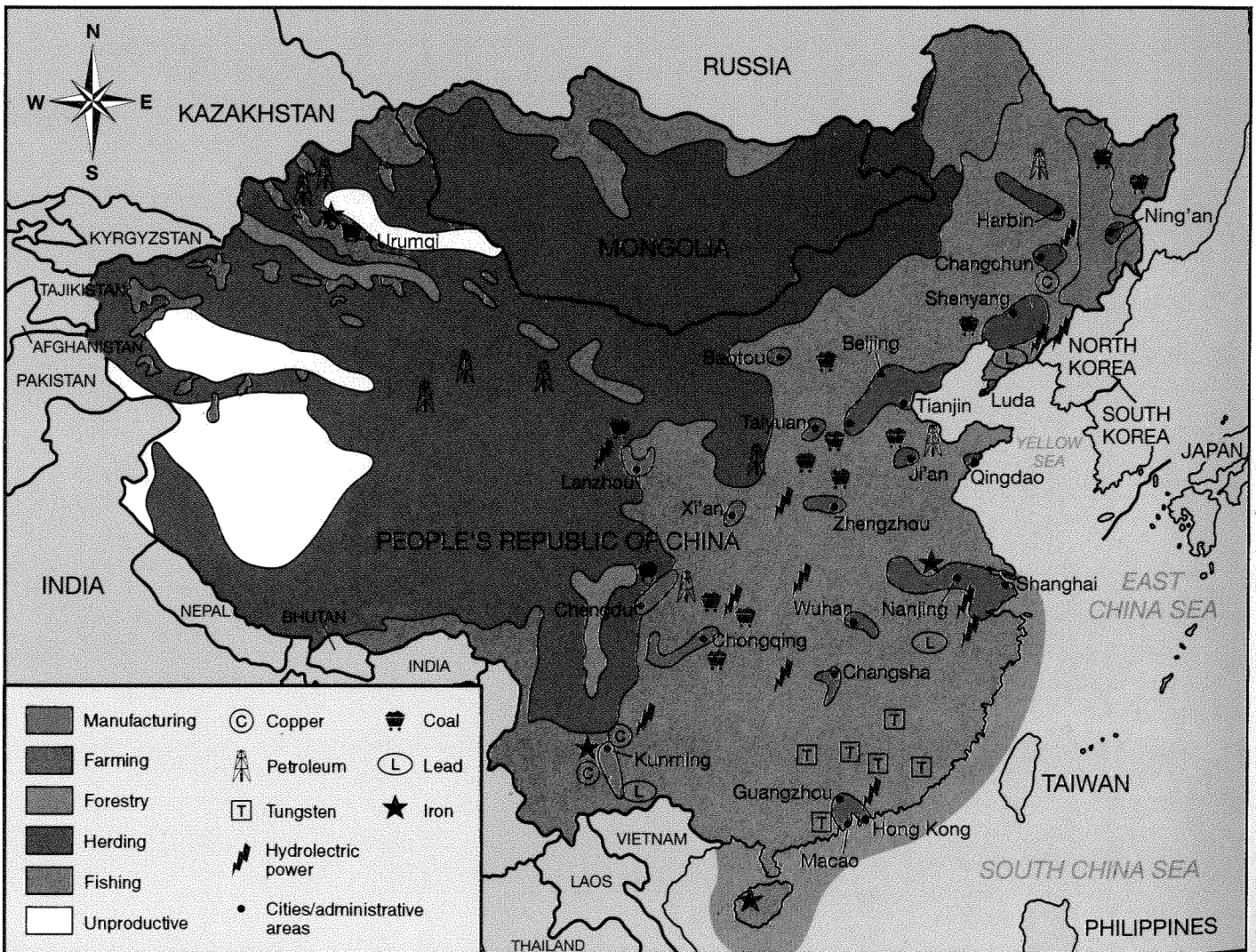
Fill in the missing direction initials on the compass rose below.

1.



Use the map of land use in China to answer the questions on the following page.

CHINA LAND USE



2. What is shown on this map?

- a. land use
- b. population
- c. climate and weather
- d. mountains and plains

3. In what part of China is Mongolia located?

- a. southern
- b. eastern
- c. northern
- d. western

4. What does this symbol stand for on the map?

- a. lead
- b. tungsten
- c. zinc
- d. oil

5. Where are most of the forests found in China?

- a. in the northeast
- b. in the southeast
- c. along the southern border
- d. along the western border

6. What is the major resource found mostly along the South China Sea coast?

- a. lead
- b. copper
- c. fish
- d. forests

7. Where is most of the unproductive land found in China?

- a. along the southeastern coast
- b. along the northeastern coast
- c. in the western half
- d. in the southern half

8. What resource do you find closest to the city of Baotou?

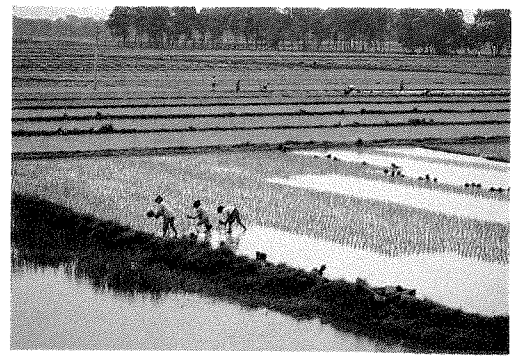
- a. fish
- b. hydroelectric power
- c. copper
- d. coal

9. Which resource do you find along the border between China and North Korea?

- a. hydroelectric power
- b. fish
- c. oil
- d. tungsten

10. What city is found in southwest China, near copper and iron mines?

- a. Shanghai
- b. Beijing
- c. Kunming



Rice paddies cover eastern lowlands of China.

11. What three resources are found most in western China?

- a. coal, fishing and forests
- b. coal, petroleum and forests
- c. coal, petroleum and lead
- d. coal, petroleum and fishing

12. What resource would you find the most of if you were traveling northeast from Xi'an to Baotou?

- a. tungsten
- b. oil
- c. copper
- d. coal

13. What is the land around the cities of Nanjing and Shanghai used for?

- a. forestry
- b. farming
- c. manufacturing
- d. herding

14. Which of these gives two resources found in the northeast corner of China?

- a. forests and coal
- b. fish and forests
- c. coal and fish
- d. tungsten and coal

15. Which city would be the best place for a fish cannery that needed hydroelectric power to operate?

- a. Urumqi
- b. Guangzhou
- c. Baotou