

TABLE OF CONTENTS

PREFACE	5
HANDWRITING CHART	6
LEARNING HOW TO SPELL WORDS	7
UNIT 1: Spelling Long 'a'	8
UNIT 2: Spelling 'a' Sounds	11
UNIT 3: Spelling 'e' Sounds	14
UNIT 4: Spelling 'i' Sounds	17
UNIT 5: Spelling 'o' Sounds	20
UNIT 6: Spelling 'u' Sounds	23
UNIT 7: Spelling the 'er' Sound	26
UNIT 8: Spelling the 's' Sound	29
UNIT 9: Spelling the 'k' Sound	32
UNIT 10: Spelling the 'sh' Sound	35
UNIT 11: Tricky Trailers: -ar, -er, -or	38
UNIT 12: Tricky Trailers: -ar, -er, -or	41
UNIT 13: Tricky Trailers: -cal, -cle	44
UNIT 14: Tricky Trailers: -cy, sy	47
UNIT 15: Tricky Trailers: -ise, -ize, -yze	50
UNIT 16: Tricky Trailers: -able, -ible	53
UNIT 17: Tricky Trailers: -eous -lous	56
UNIT 18: Tricky Trailers: -ant, -ent	59
UNIT 19: Tricky Trailers: -clous, -tlous	62

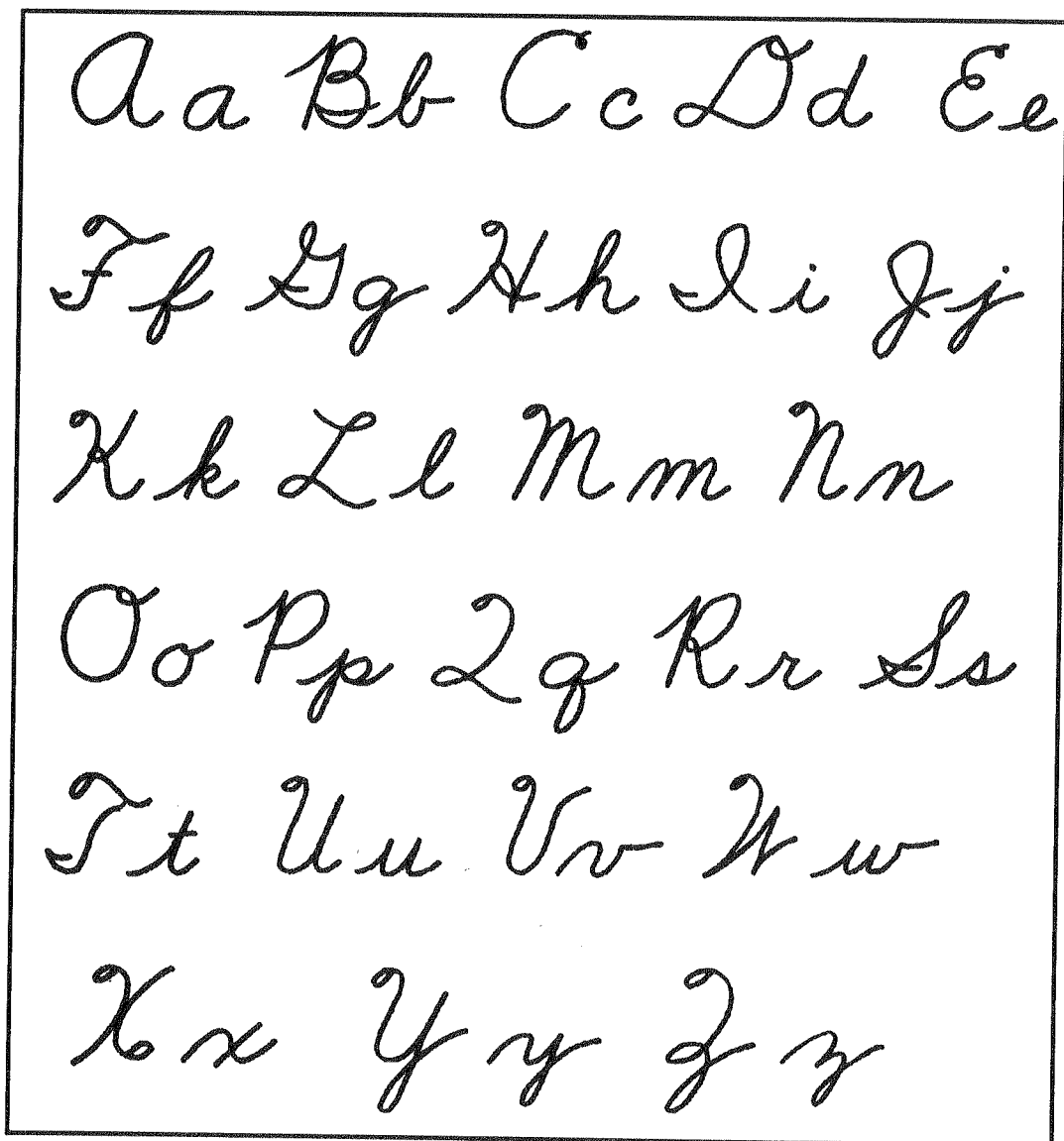
UNIT 20: Tricky Trailers: -ance, -ence	65
UNIT 21: a, e, or i	68
UNIT 22: c, s, or sc	71
UNIT 23: Suffix Rule One	74
UNIT 24: Suffix Rule Two	77
UNIT 25: Suffix Rule Three	80
UNIT 26: au, aw, ou, ow	83
UNIT 27: Suffix Rule One Exceptions	86
UNIT 28: Suffix Rule Two & Three Exceptions	89
UNIT 29: per- or pur- / de- or di-	92
UNIT 30: English Prefixes	95
UNIT 31: Latin Prefixes	98
UNIT 32: Latin Prefixes	101
UNIT 33: Greek Prefixes	104
UNIT 34: Discriminating Synonyms	107
UNIT 35: Change of Accent	110
UNIT 36: 'l' or 'll'	113
UNIT FINAL TEST FORMS	116-127

ALPHABET

Aa Bb Cc Dd Ee Ff Gg Hh Ii Jj Kk Ll Mm

Nn Oo Pp Qq Rr Ss Tt Uu Vv Ww Xx Yy Zz

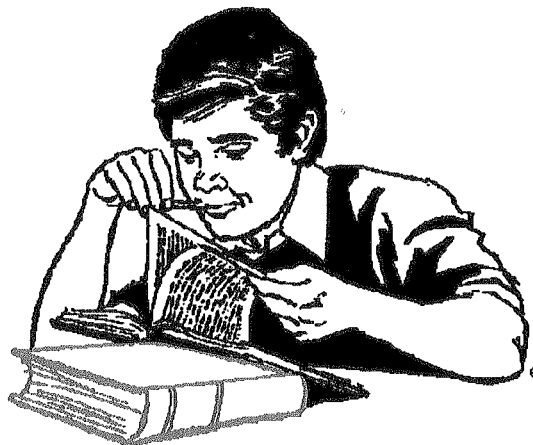
CURSIVE ALPHABET



LEARNING

HOW TO

SPELL WORDS



1. Look at the word. Study every letter.
2. Say the word to yourself.
3. Say it again aloud, and then spell it.
4. Copy the word on paper, naming the letters as you write.
5. Close your spelling book, and test yourself.
Write the word.
Do not worry if you do not get it right the first time.
6. Open your spelling book again. Check the word.
7. Study the word one more time, and test yourself
by writing the word again.

* * * * *

As with all of your school work, always remember to ask God to help you learn and understand what you are doing. Thank Him for His help with every lesson.

UNIT 1

SPELLING LONG 'A'

LESSON 1

Study these list words, using the study plan on page 7.

brace	portray
glaze	crayfish
crazy	playmate
plague	skein
quaint	freight
frail	they
maim	whey
strain	break
chaise	greatness
bray	gauge

LESSON 2

VOCABULARY / DICTIONARY

Use these list words in sentences. Consult a dictionary, if necessary, to understand their meanings. You may use any tense (past, present, or future) of verbs, either singular or plural form of nouns, and comparative (-er) or superlative (-est) forms of adjectives and adverbs, if you are careful to spell these alternative forms correctly.

chaise _____

quaint _____

skein _____

glaze _____

plague _____

whey _____

crayfish _____