

READING LOOPED CURSIVE

Italic cursive is easy to read because it is free of loops. We also need to be able to read looped cursive. This is easy to do with some "decoding" help. We already know how to recognize different versions of an object as the same thing.

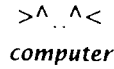


photograph



drawing

The photograph, line drawing and computer text art we recognize as a cat.



For example, see the cats:

Today, there are many versions of the alphabet. Can you recognize all these as the letter A?



HISTORY OF THE ALPHABET

Our alphabet didn't always look as it does today.

Aa Bb Cc Dd Ee Ff Gg Hh Ii Jj Kk Ll Mm Nn Oo Pp Qq Rr Ss Tt Uu Vv Ww Xx Yy Zz

CAPITAL LETTERS

2000 BC to 300 BC

Phoenician

Greek

Roman

Rustic

Uncial

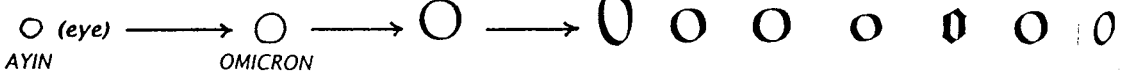
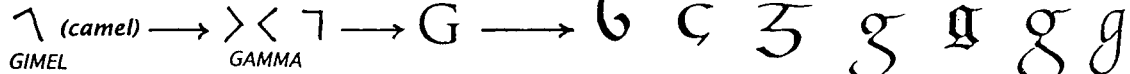
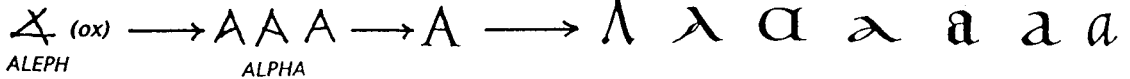
Half-Uncial

Carolingian

Gothic

Humanist

Italic



Lowercase letter shapes came from capitals.

1st to 15th centuries

Some letters changed a lot over time.

Some letters changed very little.

HISTORY OF CURSIVE WRITING

Italic 15th century

Round-hand 18th century

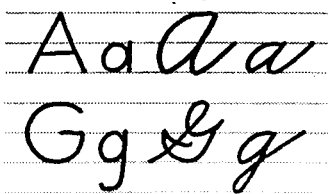
Spencerian 19th century



There are many handwriting styles today. Three are shown here.

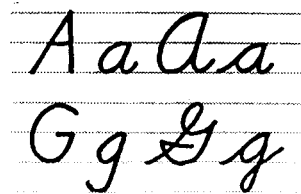
Example #1

looped cursive



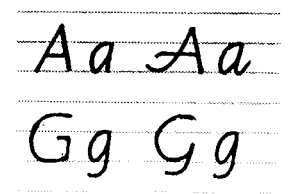
Example #2

looped cursive

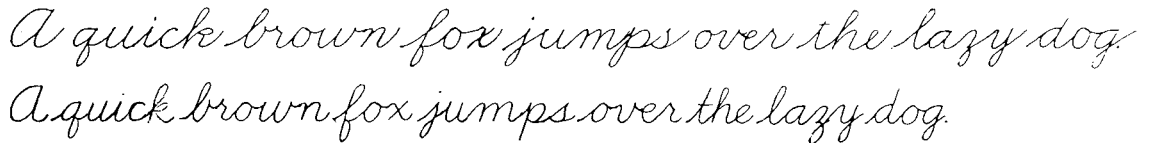


Getty-Dubay

cursive italic



Looped cursive



Cursive italic



Written quickly, looped cursive can look like this:



READING LOOPED CURSIVE

LEARNING TO READ LOOPED CURSIVE

These two pages show the looped cursive letters that are most like cursive italic and those that are least like cursive italic.

1. Read each looped cursive letter.
2. Read the word that uses the letter.
3. Read the word written quickly. See if the letter changes. Do you need to decode it when it is written quickly?
4. Write the word in cursive italic.

IDEA FOR PRACTICE

Collect mail envelopes to practice reading different handwriting styles, such as cursive italic, looped cursive, all capitals, and printing. Compare the handwriting which is easiest to read with the handwriting which is hardest to read and needs decoding. (Those envelopes with very hard to read handwriting never get delivered!) To decode, circle the hard-to-read letters and find a match with the looped cursive letters shown here.

LOOPED CURSIVE LOWERCASE

Read each looped cursive letter. Read the word.

Read the word written quickly.

Write the word in cursive italic.

These looped cursive letters are similar to cursive italic letter shapes.

a ant

ant

a

c cocoon

cocoon

c

d dime

dime

d

u until

until

u

m many

many

m

e even

even

e

These letters have looped descenders.

j juggle

juggle

j

p puppy

puppy

p

q quiet

quiet

q

These letters have looped ascenders.

h high

high

h

k kick

kick

k

l lilies

lilies

l

Looped cursive: t is taller

t tent

tent

t

v and w are rounder

v wave

wave

v

x joins out at the baseline

x exit

exit

x

READING LOOPED CURSIVE

SEE: b, f, r, s, & w

Read each looped cursive letter and word.

Write the word in cursive italic.

These five looped cursive letters are different in shape from cursive italic. Learn to read these letters.

b	brief	brief	b
f	fluffy	fluffy	f
r	record	record	r
s	shows	shows	s
z	zigzag	zigzag	z

NOTE: looped cursive r and s can be hard to read after, b, o, v, & w.

LOOPED CURSIVE CAPITALS

Some looped cursive capitals look like large lowercase letters. (A, M, N)

A	Alana	Alana	A
M	Mary	Mary	M
N	Nick	Nick	N

Other capitals have extra entrance and exit strokes.



F	Fran	Fran	F
G	Gail	Gail	G
I	Ian	Ian	I
J	Janet	Janet	J
L	Larry	Larry	L

Q Q Q Q Q

Q	Quincy	Quincy	Q
S	Sally	Sally	S
T	Tom	Tom	T
V	Vicki	Vicki	V
X	Xavier	Xavier	X
Z	Zack	Zack	Z

See next page for a list of all the looped cursive letters.

READING LOOPED CURSIVE

COMPARING LOOPED CURSIVE WITH CURSIVE ITALIC

Look at the examples of looped cursive and cursive italic.

Compare the two styles of writing. Notice the differences in letter shape, letter slope, capital height, ascender height, and descender length.

There are many styles of writing you need to be able to read.

Practice reading looped cursive.

To help read the looped cursive letters, each name contains both a capital letter and its lowercase version.

SHAPE:

Look at the different shapes of the looped cursive lowercase letters b, f, r, s, and z and the capital letters F, G, I, J, Q, S, T, V, X, and Z.

SLOPE:

Look at the slope difference.

Cursive italic letter slope is 5° and looped cursive is 30°.

SIZE:

Look at the size difference.

Cursive italic capitals, ascenders, and descenders are 1 1/2 body heights. Looped cursive capitals, ascenders and descenders are 2 body heights.

Compare the absence of loops in cursive italic with the many loops in looped cursive. Look at how the capitals, ascenders, and descenders become tangled in the looped cursive.

Loop-free italic is easy to read.

LOOPED CURSIVE

30° slope

Angela
Barbara
Cecilia
David
Eugene
Fifi
Gregory
Hannah
Irving
Jojo
Kirk
Lillian
Malcolm
Nancy
Otto
Philippa
Quequeg
Richard
Susan
Trent
Ursula
Vivian
Woodrow
Xerxes
Yonny
Zanzi

CURSIVE ITALIC

5° slope

Angela
Barbara
Cecilia
David
Eugene
Fifi
Gregory
Hannah
Irving
Jojo
Kirk
Lillian
Malcolm
Nancy
Otto
Philippa
Quequeg
Richard
Susan
Trent
Ursula
Vivian
Woodrow
Xerxes
Yonny
Zanzi