

Notebook Pages Introduction

Welcome to Exploring Creation with Zoology I by Jeannie Fulbright, published by Apologia Educational Ministries, Inc.

These pages are designed to be used in conjunction with the notebook assignments in Exploring Creation with Zoology I. They will serve as a guide for your child to design and create a book of their own knowledge of zoology.

Please Note: Lesson 13 requests the students to create a set of flashcards in order to learn the insect orders. These have been created in a separate document entitled Zoology I flashcards.

Zoology



Zoology



Kingdom	Phylum	Class	Order	Family	Genus	Species
K	P	C	O	F	G	S

Classification

Flight

Carolus Linnaeus



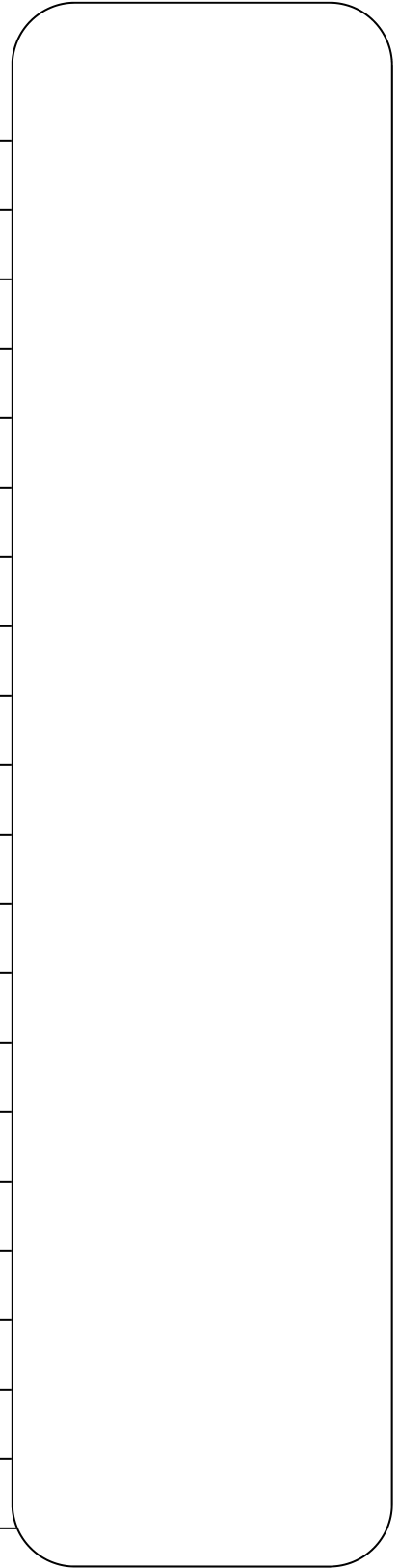
A series of horizontal lines for writing, starting below the title and extending across the page.

Zoology

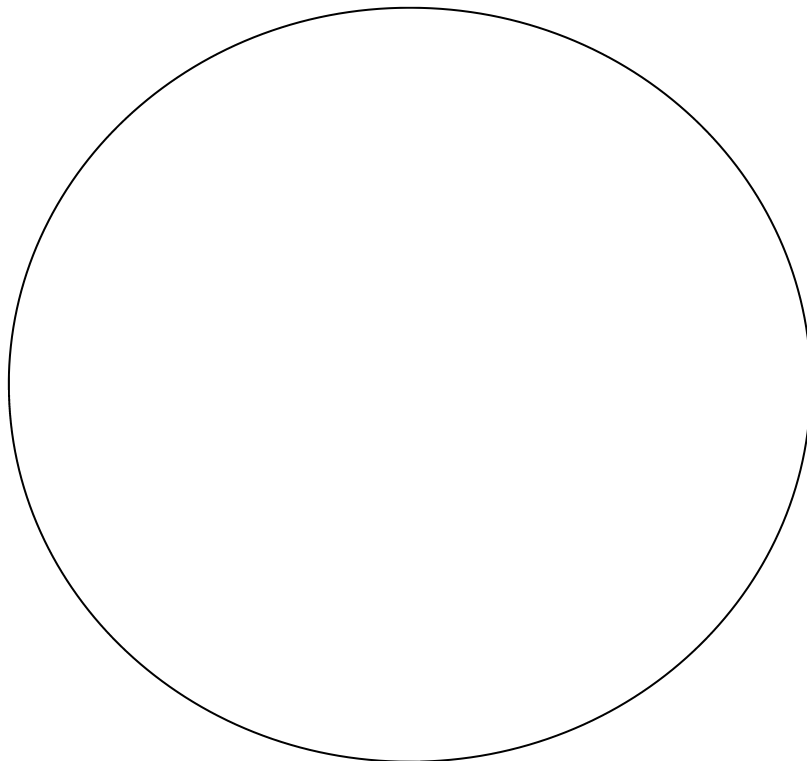
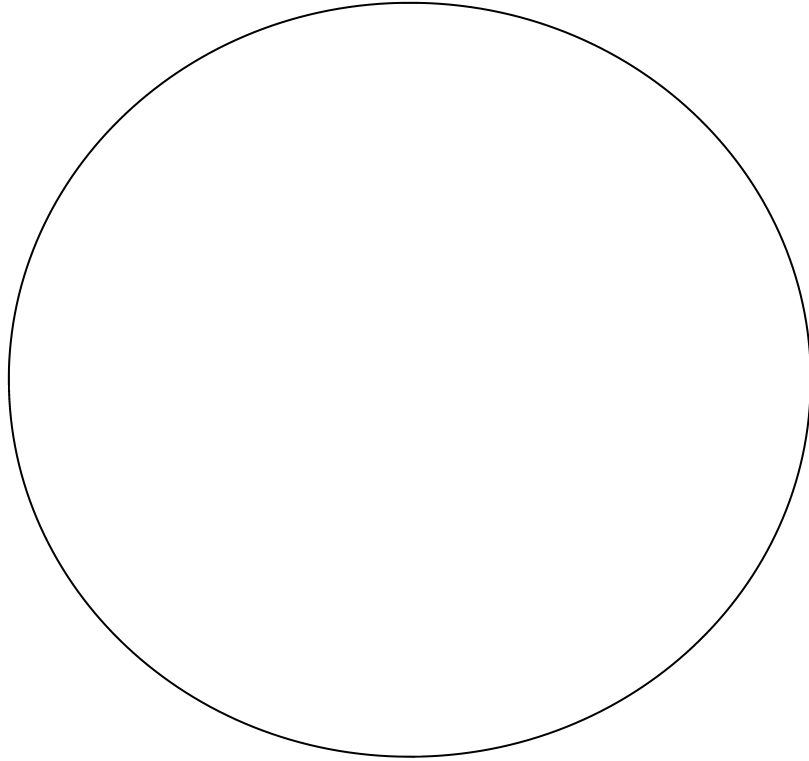
Habitat

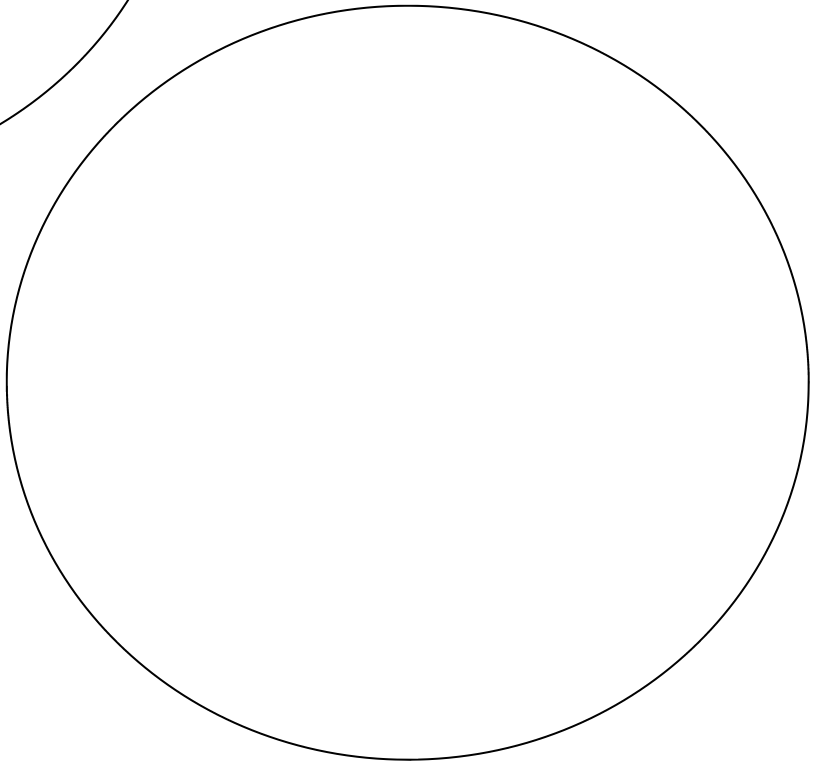
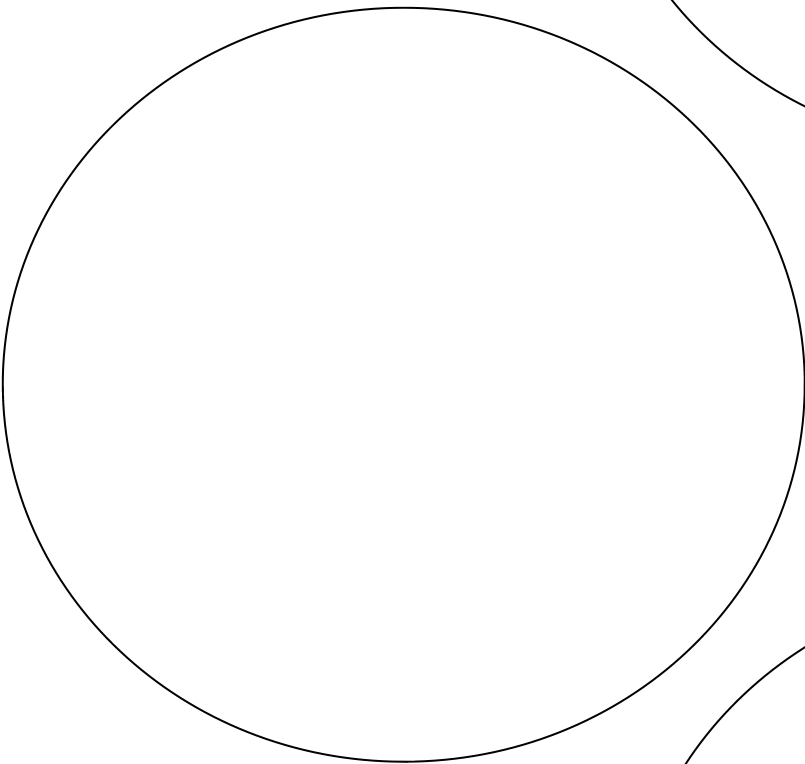
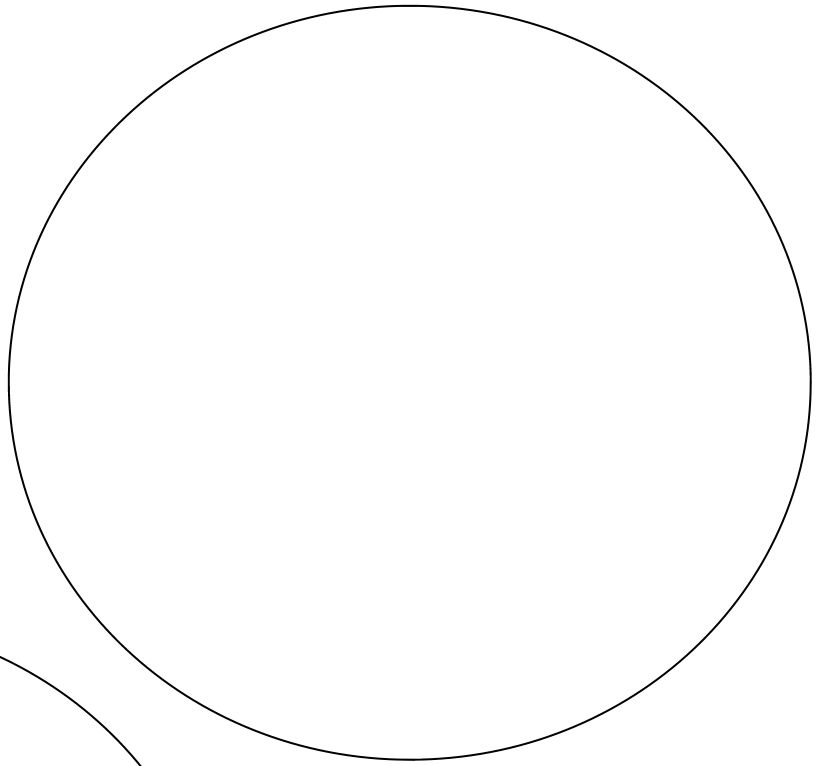
Instinct

Extinction



Five Biomes





Scavenger Hunt List

Three feathers found on the ground (To keep any feather, it must be from a game bird like a duck, goose, pheasant, chicken, dove, etc. Many other birds are protected as endangered species, and it is illegal to keep their feathers.)

A bird with red coloring on it

A bird with blue coloring on it

A bird's nest (Do not take it home.)

A hole in a tree high above the ground

A bird soaring through the air

A flock of birds

A beetle

An ant hill

A bumblebee

A butterfly with yellow colors

A butterfly with brown colors

A butterfly with orange colors

A butterfly that is mostly white

A caterpillar (This is the young version of a moth or butterfly.)

A bird egg shell on the ground (best found in spring or early summer)

A type of bird (other than a duck or goose) that is using water in some way

A bat flying through the sky (Look for bats in the evening around dusk.)

The sound of a bird singing (See if you can find it by following its sound.)

The sound of a woodpecker drumming

A grasshopper that has wings and can fly (best found in late summer)

A bird carrying food or nesting material

A praying mantis or one of its egg cases

The cocoon of a moth or the chrysalis of a butterfly

An insect or cocoon wrapped inside a leaf

A dragonfly

A Japanese beetle or June beetle

A leaf with eggs laid on the underside

A leaf with eggs laid on the upper side

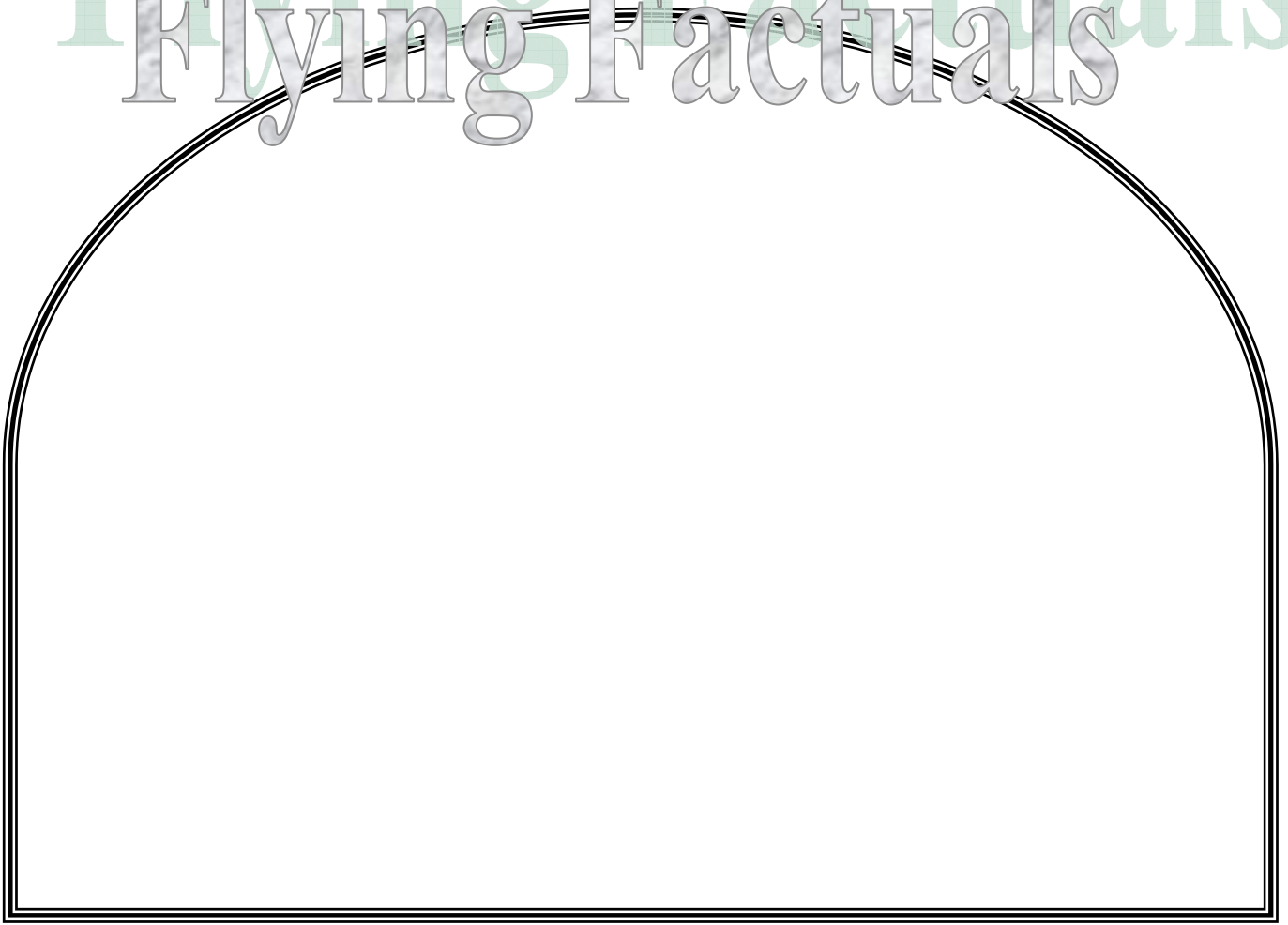
A gall (an unusual growth) on a leaf or a plant (oak leaves and branches commonly have them)



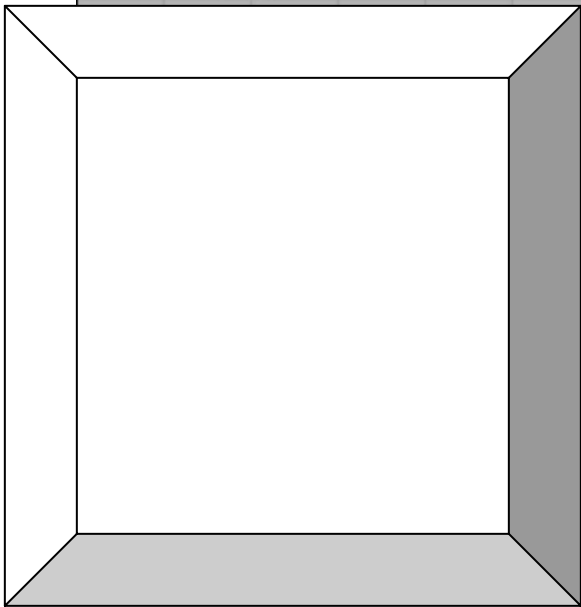
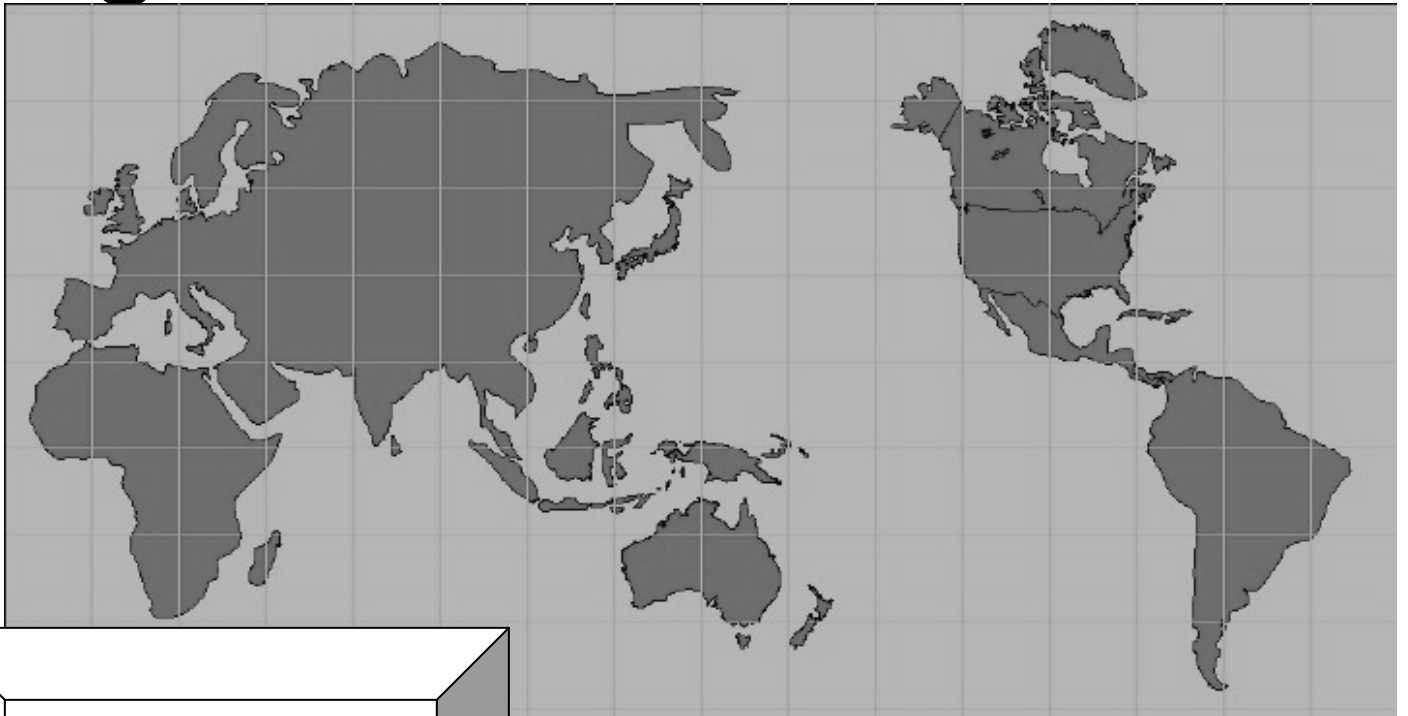
Bird Map



Flying Factuals



Migration Route of the



Summer
Residents

A large, empty rounded rectangular box with a thin black border, intended for listing or describing summer residents.

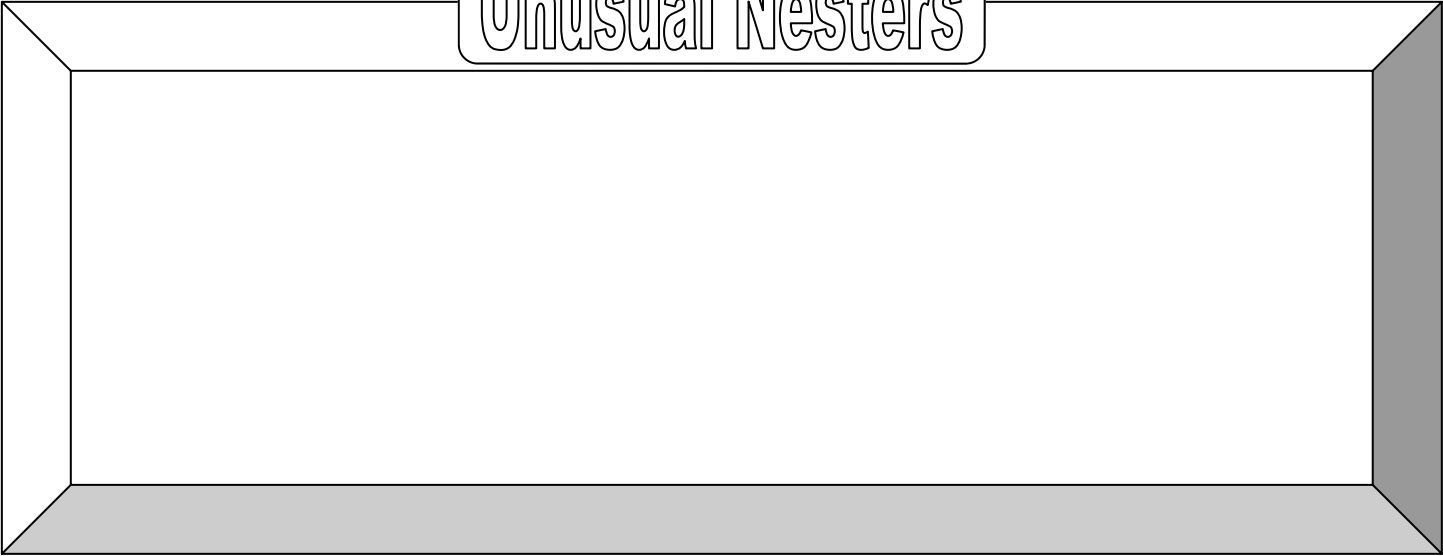
Winter
Residents

A large, empty rounded rectangular box with a thin black border, intended for listing or describing winter residents.

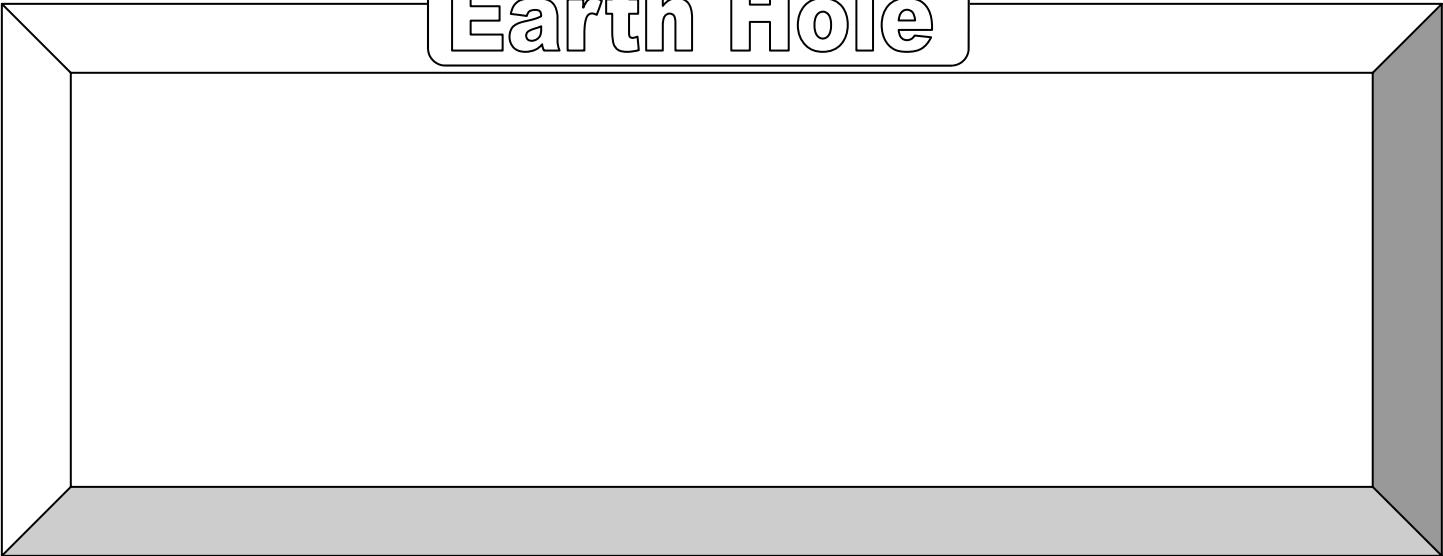
Permanent
Residents

Migrants

Unusual Nesters



Earth Hole



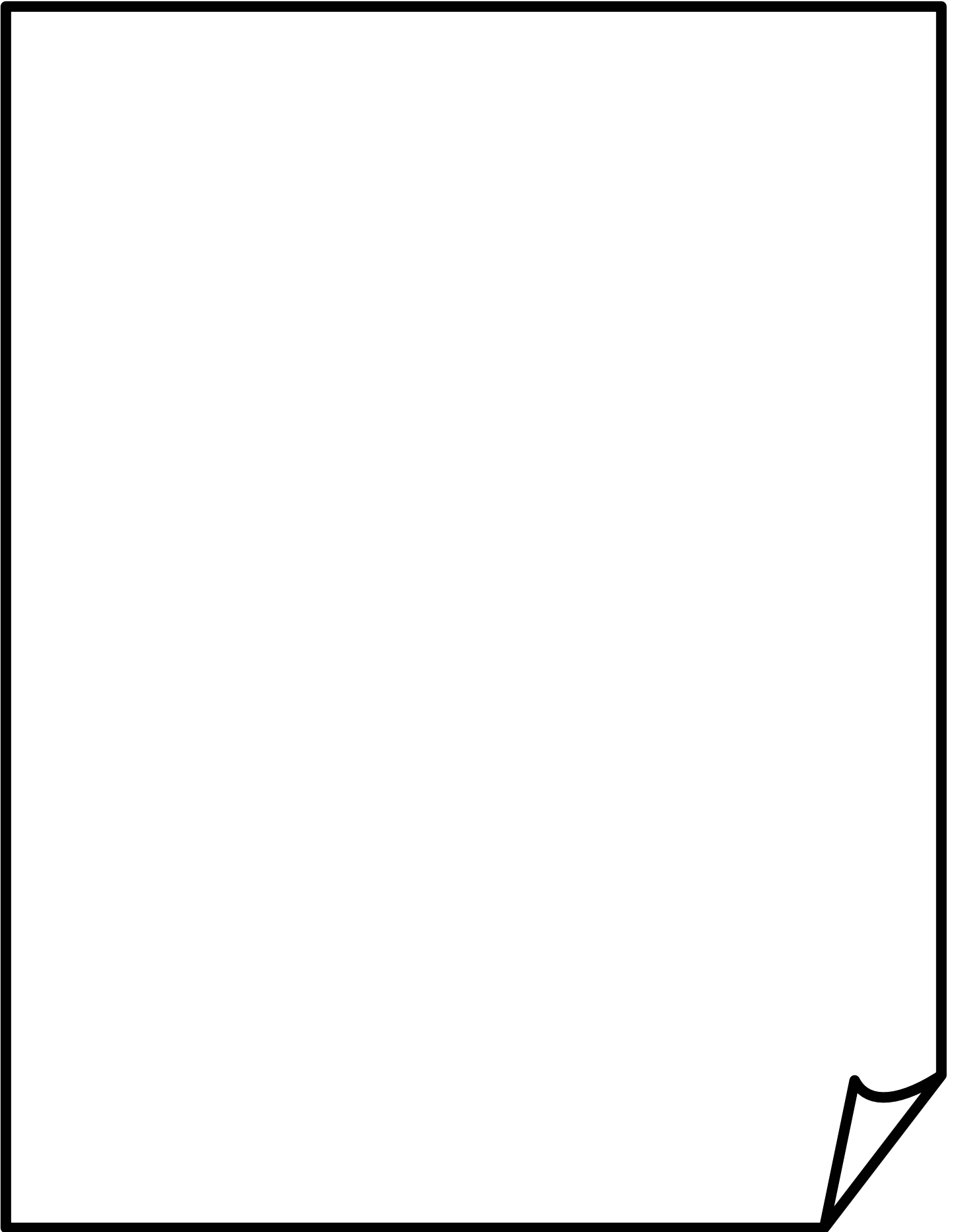
Cup Nesters



Ground Nesters

Cavity Nesters

Platform Nesters

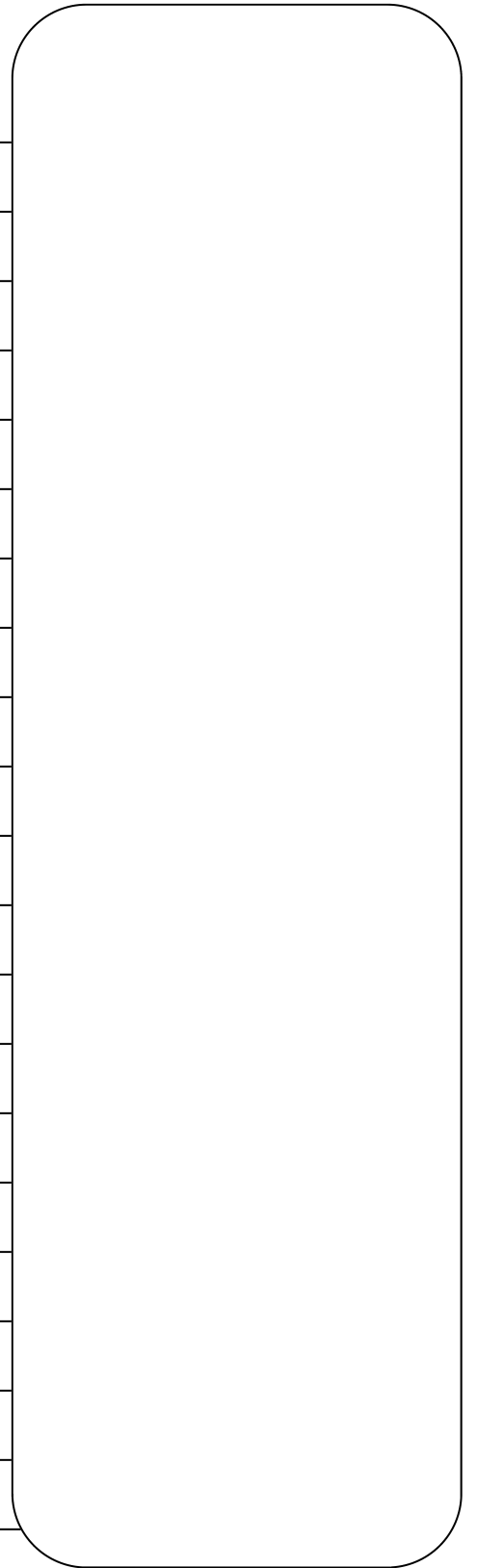


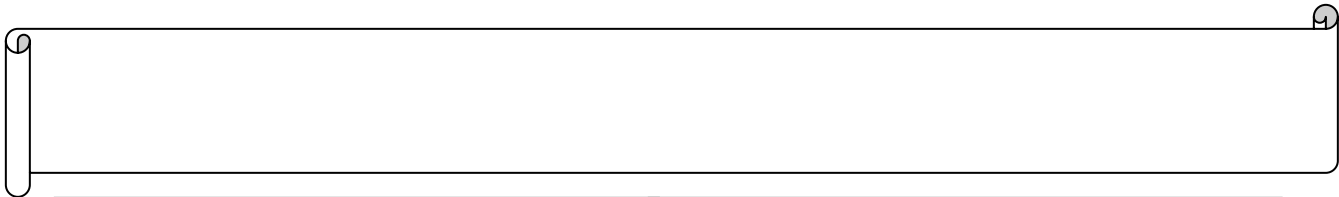
Matching & Hatching

Courtship

Eggs

Hatchlings





Hibernation

Flying Reptiles

What I know

What I guess

What I learned

Flying Reptiles



Insects



Classification

Exoskeleton

Eyes

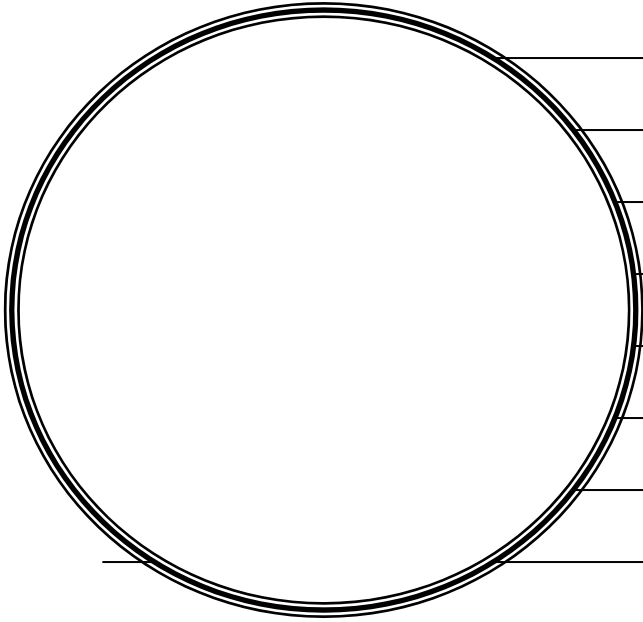
Head

Antennae

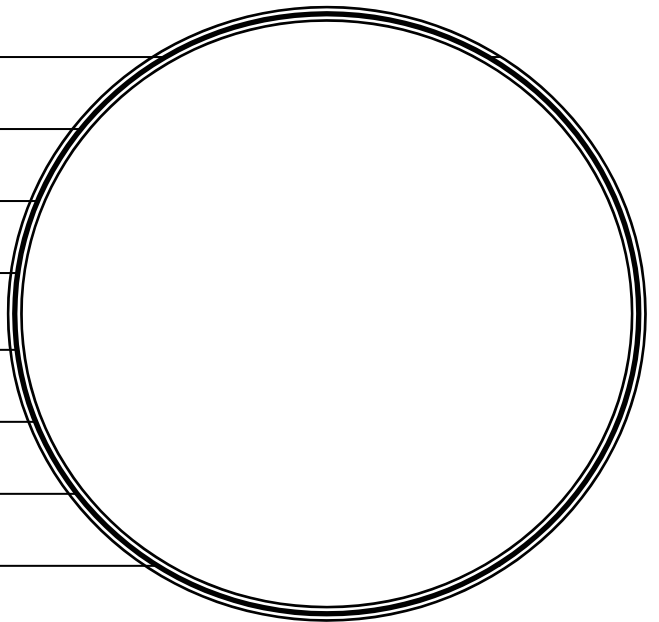
Mouth

Body

Defense



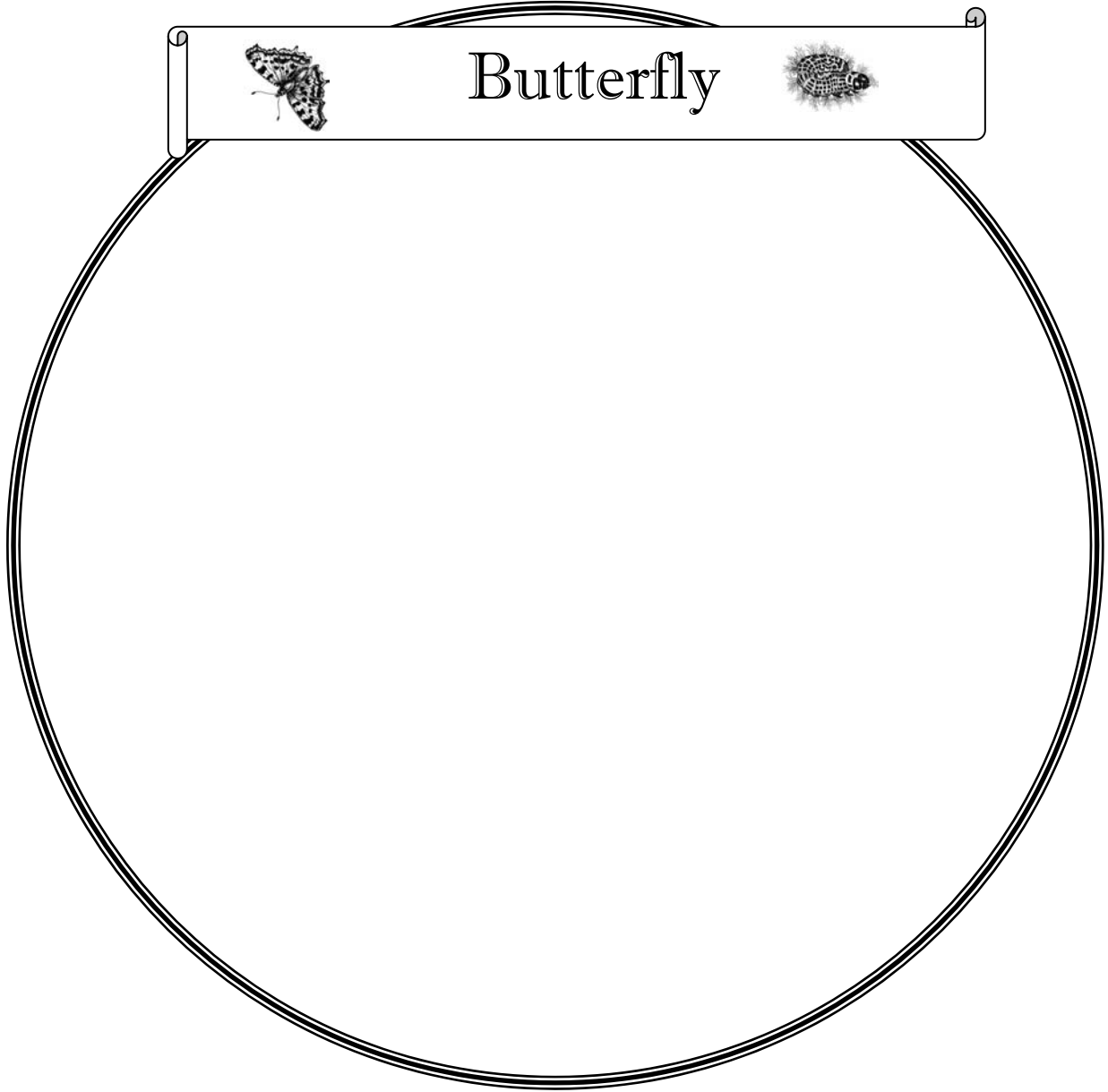
A series of horizontal lines for writing, extending across the width of the page. The lines are evenly spaced and provide a guide for text entry.



Life Cycle Diagrams

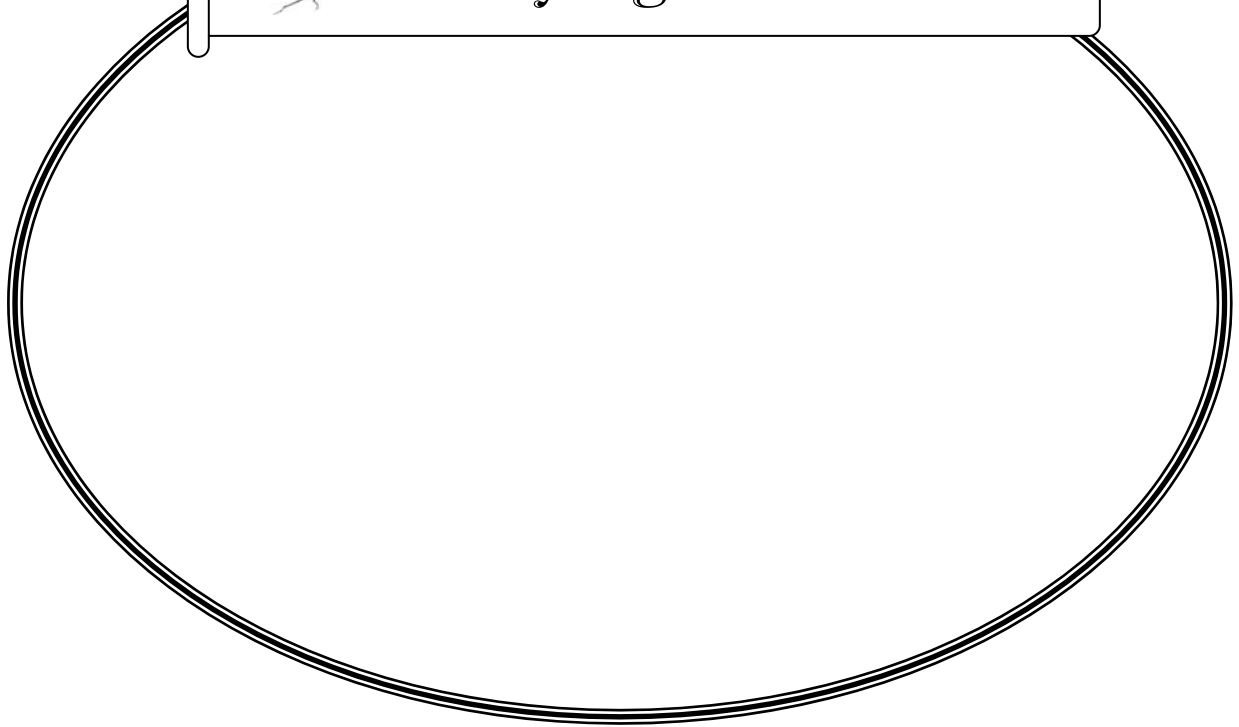


Butterfly

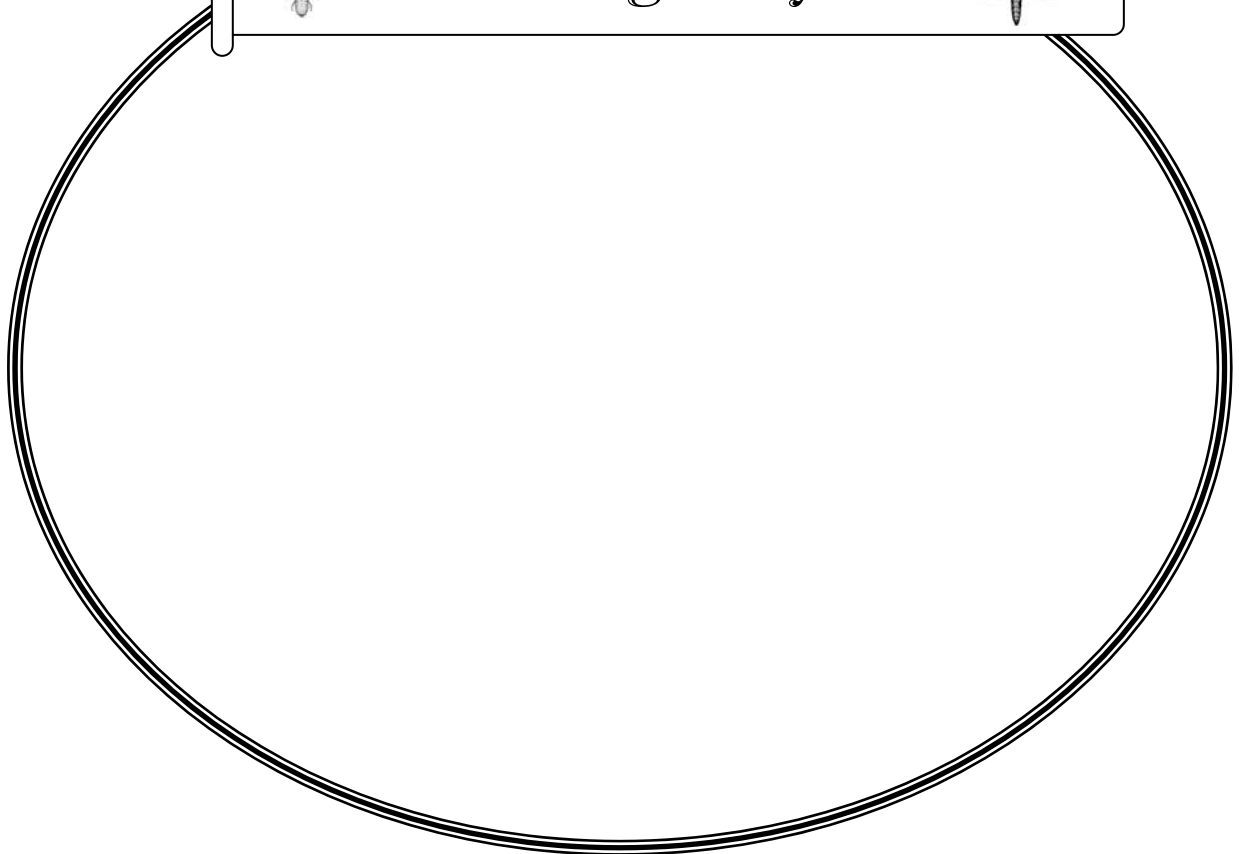




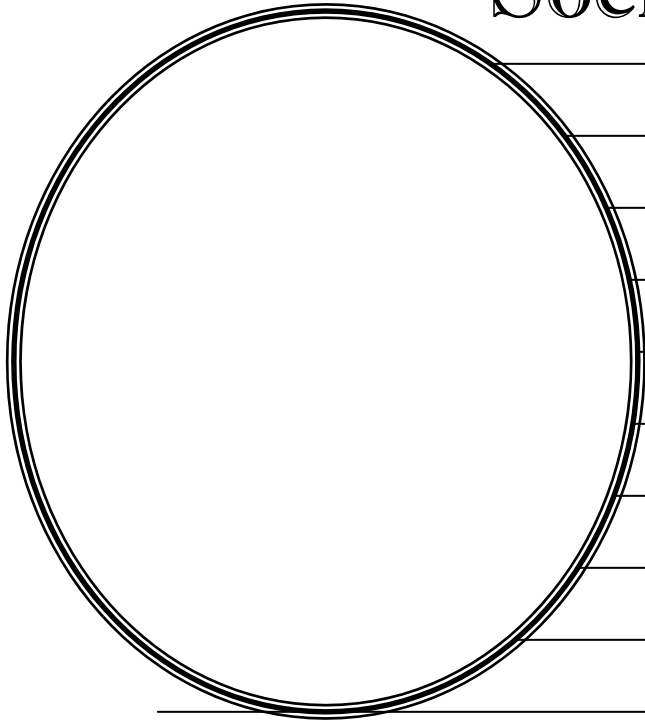
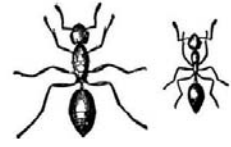
Praying Mantis



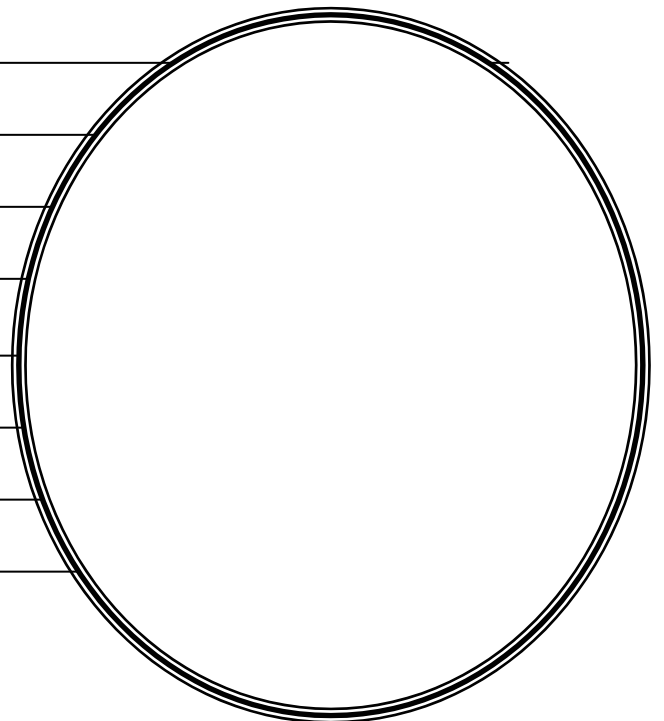
Dragonfly



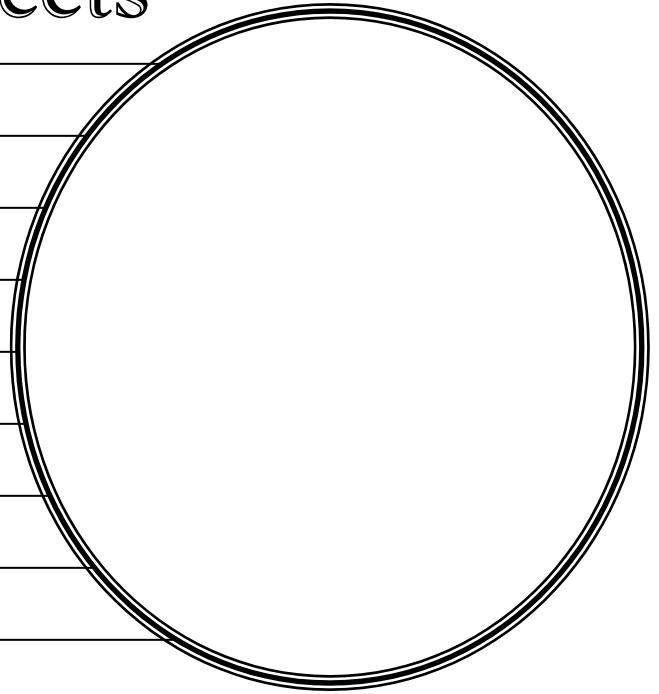
Social Insects



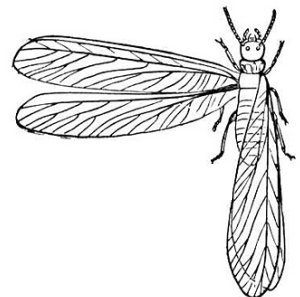
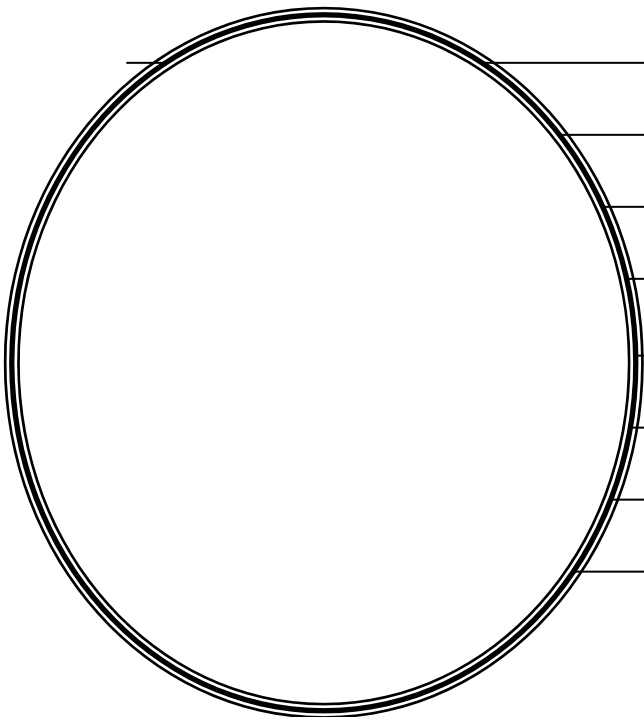
A series of horizontal lines for writing, starting from the top right and extending across the page. The lines are evenly spaced and provide a guide for text entry.



Social Insects

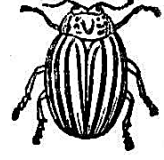


A series of horizontal lines for writing, starting from the top margin and extending across the page. The lines are evenly spaced and provide a guide for text entry.



A series of horizontal lines for writing, starting from the right margin and extending across the page. The lines are evenly spaced and provide a guide for text entry.

Beetles





Flies

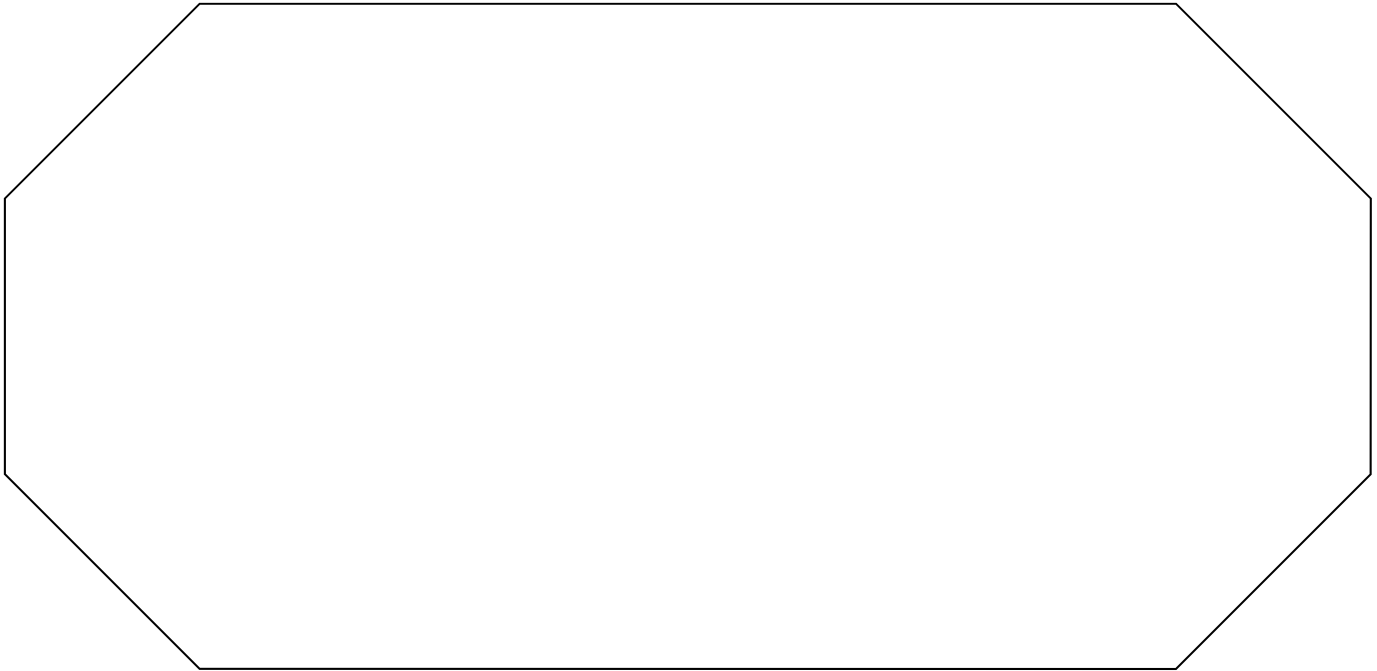


A series of 20 horizontal lines for writing, arranged in two columns of ten lines each. The lines are evenly spaced and extend across most of the page width.

A large, vertically oriented rectangular area on the right side of the page, framed by a double-line border. The area is empty and intended for a drawing or illustration.

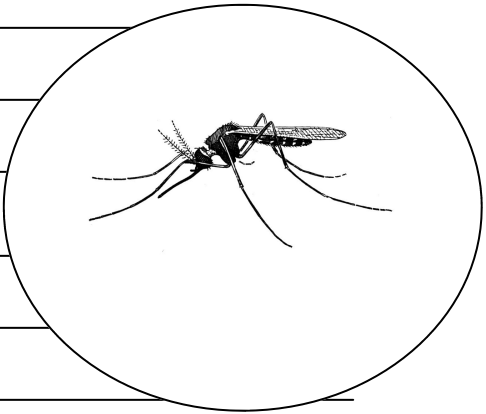
Bugs





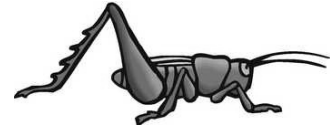
How to Avoid

Mosquitoes



A series of horizontal lines for writing, consisting of 17 parallel lines spaced evenly down the page.

Cricket Experiment



Material Used				
First check				
Second Check				
Third Check				
Fourth Check				
Fifth Check				

Butterflies

Moths

Both

